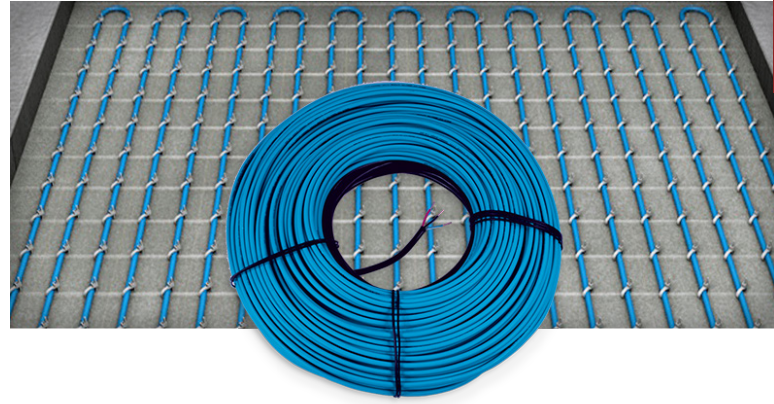


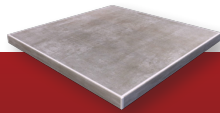


Slab Heat Cable

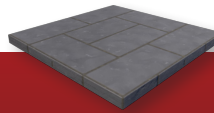
Are you considering installing heated concrete floors in your home? Even if you aren't building a new home, perhaps you're thinking about adding a sunroom or garage to your house. If you want to enjoy your sunroom in all four seasons, or comfortably enjoy the beauty of a trendy new polished, stamped or stained concrete floor, you'll appreciate radiant heating under foot. With WarmlyYours' concrete heating cables, you can design your concrete floors to be as warm and functional as they are attractive.



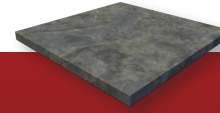
Installs under:



Polished Concrete



Stamped Concrete



Stained Concrete

Plus, installs under almost any floor covering.

Product Information

Heating Cable	Loose twin-conductor heat resistant cable
Heating Element Color	Blue
Heating Element Insulation	Fluoropolymer
Heating Cable Outer Insulation	PVC/Polyolefin
Heating Output	15-20 watts per sq. ft. (depending on spacing)
Certifications	CSA Listed for use in Canadian and U.S. markets
Warranty	10-year warranty

Example Projects

	Media Room	Basement	Garage
Heated Area	300 sq. ft.	400 sq. ft.	576 sq. ft.
Product Cost	\$2,170.00 USD \$2,604.00 CAD	\$2,960.00 USD \$3,552.00 CAD	\$4,300.00 USD \$5,160.00 CAD
Hourly Cost*	31¢/hr USD 37¢/hr CAD	42¢/hr USD 49¢/hr CAD	60¢/hr USD 70¢/hr CAD

* Based on national average electric cost of 12¢ per kWh (USA) and 14¢ per kWh (Canada) and a spacing of 3".

Dimensions

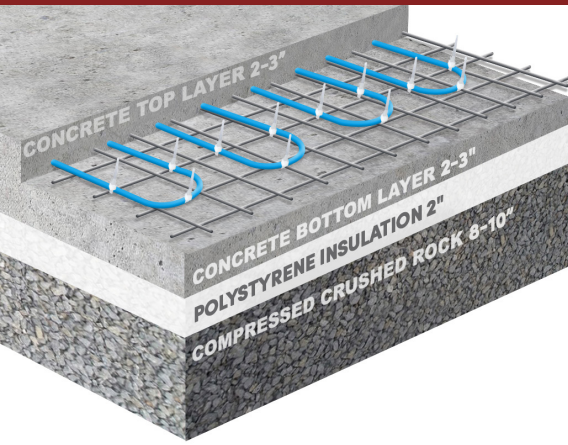
Sizes	Available in cable lengths ranging from 57' to 563'
Heating Element Thickness	5/16"
Cold Lead Information	<ul style="list-style-type: none"> Length: 20' 14 AWG for rolls less than 12 Amps 12 AWG for rolls of 12 Amps and more
Factory Splice Max Size	9/16" in diameter, approx. 6" long

Electrical

- ✓ Slab Heat Cables have no polarity.
- ✓ WarmlyYours controls are equipped with ground fault circuit interrupter (G.F.C.I.) protection.

Voltage	Available in 120V, 240V
Cold Lead Construction	2 core wires and ground conductor
Cold Lead Wire Colors	<ul style="list-style-type: none"> 120V: Yellow & black with green ground conductor 240V: Red & black with green ground conductor

4 Simple Steps to Install



1

Spread and stamp down a layer of crushed rock aggregate. On top of that, lay down a layer of polystyrene insulation.

2

On top of concrete blocks or chairs, set up a rigid framework, like wire mesh, that can be used to secure the heating cable and keep it from "floating" during installation.

3

Using plastic cable ties, attach the temperature sensor and Slab Heat Cable to the wire mesh per your custom SmartPlan™.

4

Pour 4 to 6 inches of concrete to embed the Slab Heat Cable, leaving it 2 to 3 inches beneath the finished surface.

Installation Information

- Heating cable should be installed within 2" to 3" from the top of the flooring surface.
- Multiple heating cables can be wired to a control, as long as they total less than 15 amps (the limit of the controller).
- Multiple heating cables are never wired to each other in series (parallel wiring required). The non-heating leads from each heating cable need to hook up to the controller and be wired in parallel.
- Do not install under permanent fixtures.
- Do not shorten the heating cable. Do NOT cut the heating cable. Only the non-heating cold leads can be shortened.
- Do not run a power lead or sensor wire across a warming cable.
- Do not fold or position the heating cable so that it overlaps itself or other warming cables (this could lead to dangerous overheating).

- Do not connect the heating cable to the power supply for testing before it is embedded (this could lead to dangerous overheating). Testing is only done with a digital ohm meter.
- Cable spacing (ranging from 3" at a minimum to 5" at a maximum) will impact how many square feet of heating coverage can be installed on a single circuit. For a 120V circuit, heating coverage would range from 90 to 120 sq. ft. For a 240V circuit, this range would be from 180 to 240 sq. ft.
- Slab Heat Cable should be installed with a floor sensor. All WarmlyYours nSpiration Series thermostats come with a floor sensor.

How to Order

1

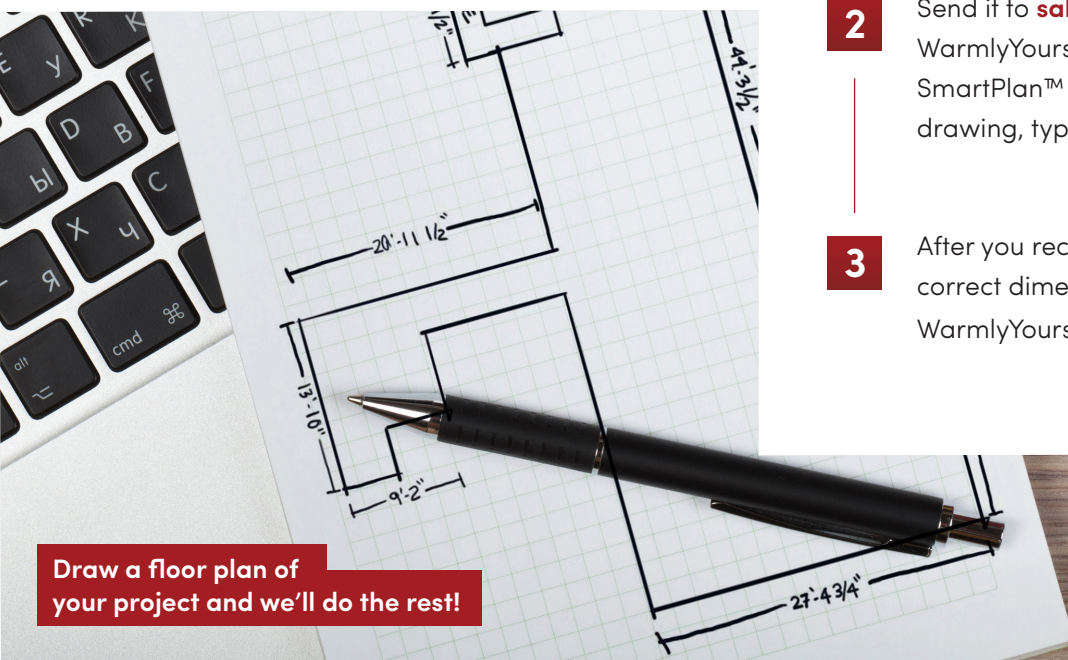
Simply draw a floor plan sketch of your project (including dimensions).

2

Send it to sales@warmlyyours.com. Then WarmlyYours's skilled engineers will create a free SmartPlan™ custom installation plan based on your drawing, typically in as little as 1 business day.

3

After you receive your SmartPlan™, just verify the correct dimensions before placing your order with your WarmlyYours account manager.



Draw a floor plan of your project and we'll do the rest!