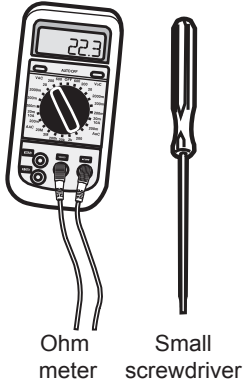
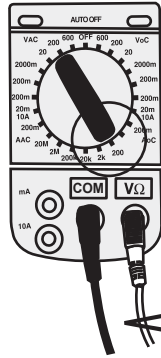




Tools:



Before beginning, verify circuit breaker is off and verify no power is present at Towel Warmer Supply Line.

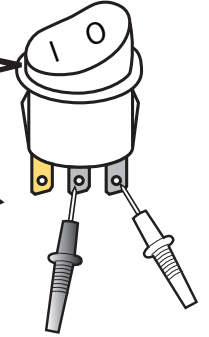


Check the Ohm meter to make sure that it contains fresh batteries and is set to a scale of 0 - 200 prior to taking any reading.

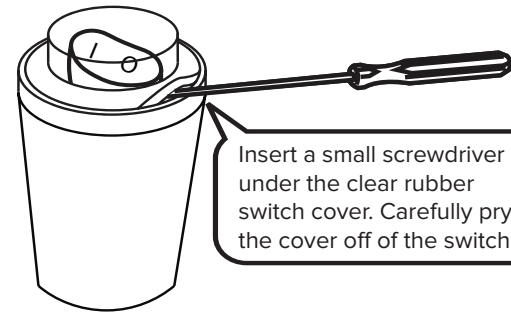
Plug the probes into the meter:
Black into **COM**
Red into **VΩ**

When taking the readings, please ensure the following:

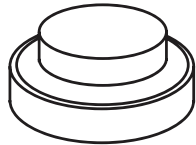
- Ensure fingers are not touching any tabs
- The probes are firmly attached to the selected tabs
- There is no power in the circuit
- The wires are not connected to the switch



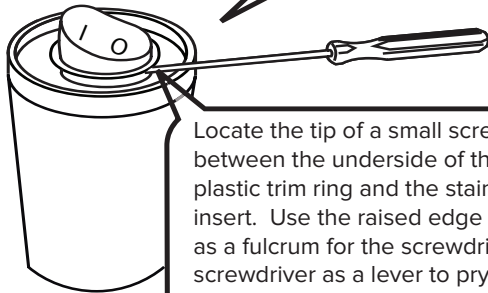
Make sure the switch is ON. Connect the probes to both silver tabs and check if there is any reading between them. If there is a reading, then the switch is good.



Insert a small screwdriver under the clear rubber switch cover. Carefully pry the cover off of the switch.

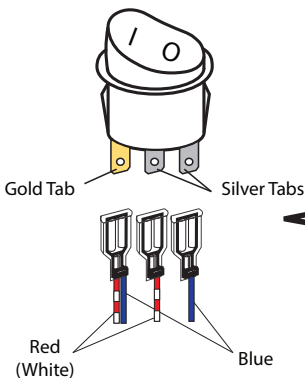
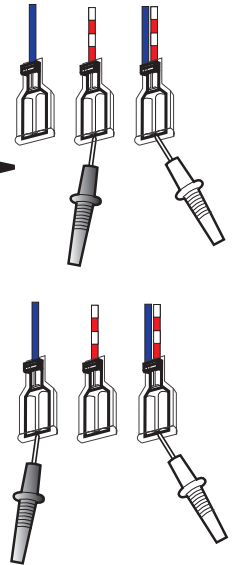


Once the cover has been removed, there will be access to the black, plastic trim ring surrounding the red toggle switch.



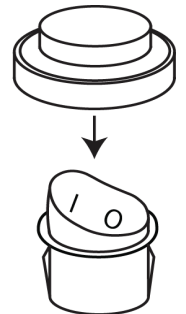
Locate the tip of a small screwdriver between the underside of the black, plastic trim ring and the stainless tube insert. Use the raised edge of the tube as a fulcrum for the screwdriver. Use the screwdriver as a lever to pry the switch out of the tube insert.

Connect one probe to the push-on terminal with two wires attached to it and the second probe to one of the push-on terminal with one wire attached to it. Check if there is any reading between them. If the reading is 90-100 ohms the towel warmer is good. If there is no reading, connect one probe to the push-on terminal with two wires attached to it and the second probe to the other the push-on terminal with one wire attached to it. Check if there is any reading between them. If the reading is 90-100 ohms the towel warmer is good. If there is no reading, then the towel warmer needs to be replaced.



The push-on terminal with the two wires attached to it is attached to the gold tab of the switch. The red(white) push-on terminal gets attached to one silver tab and the blue terminal attaches to the last silver tab. There is no polarity with these 2 connections.

Re-attach wires to tabs. Push cover down onto the switch so it covers and fits over edge of the trim ring.



Note ridge in switch and match to groove in tube insert. Push switch down into tube insert until seated.

